

**Annabella**

AESTHETIC PERFORMANCE FABRIC



**Tiffani**  
CASA MODA

# ANNABELLA

SRT fabrics, beautiful  
and innovative interior fabrics



Protection from  
Natural Stains



Easy  
Cleaning



Beautiful  
Designs



Washable



Anti Cigarette

## TECHNICAL SPECIFICATION

**Composition** 100% Polyester

**Weight (g/m²)** 314

**Width (cm)** 140

**Tensile Strength (N)**  
BS EN ISO 13934-1:1999 Pass

**Tearing Resistance (N)**  
BS EN ISO 13937-2 Pass

**Slippage Resistance (N)**  
BS 3320:1998 Pass

**Abrasion Resistance (cycle)**  
BS EN ISO 12947-2 90.000\*

**Pilling Resistance (rating)**  
BS EN ISO 12945-1 Pass

**Color Fastness to Rubbing (rating)**  
BS EN ISO 105 X 12 Pass

**Color Fastness to Light (rating)**  
BS 1006 B 02 5

**Soil and Stain Resistance (rating)**  
BS EN ISO 105 A02: Grey Scale 4

**Water Repellent Resistance (rating)**  
AATC 22/BS EN 24920: Spray Test 80(4)

**Flammability**  
BS 5852: Part 1 Smoldering Cigarette Pass

## STAIN REMOVAL METHOD

1. Clean the stain with sponge or tissue paper without pressure
2. Pour some water to the stain and wait for a few seconds
3. Press and blot the stain with sponge or tissue paper gently and repeatedly
4. Dry the fabric as necessary

## WASHING INSTRUCTION



Sponge Clean  
Recommended



Do Not  
Bleach



Do Not  
Tumble Dry



1100  
(230F) LOW



Dry Clean\*

\* If washing is needed, wash at room temperature (30°C) using mild detergent.

Batch to batch variation in shade may  
occur within commercial tolerances

\*) Independent test conducted by  
BUREAU VIRETAS INTERNATIONAL





Icy Grey



Wheat



Mid Grey



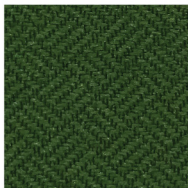
Sahara



Dark Grey



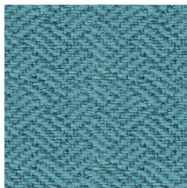
Army



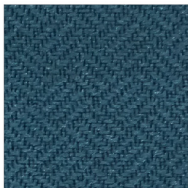
Kale



Mint



Sea Blue



Niagara

